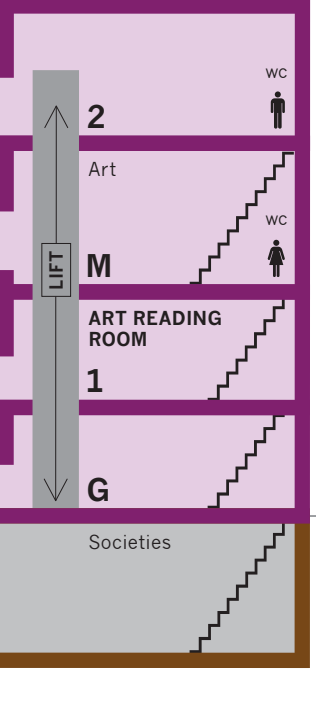
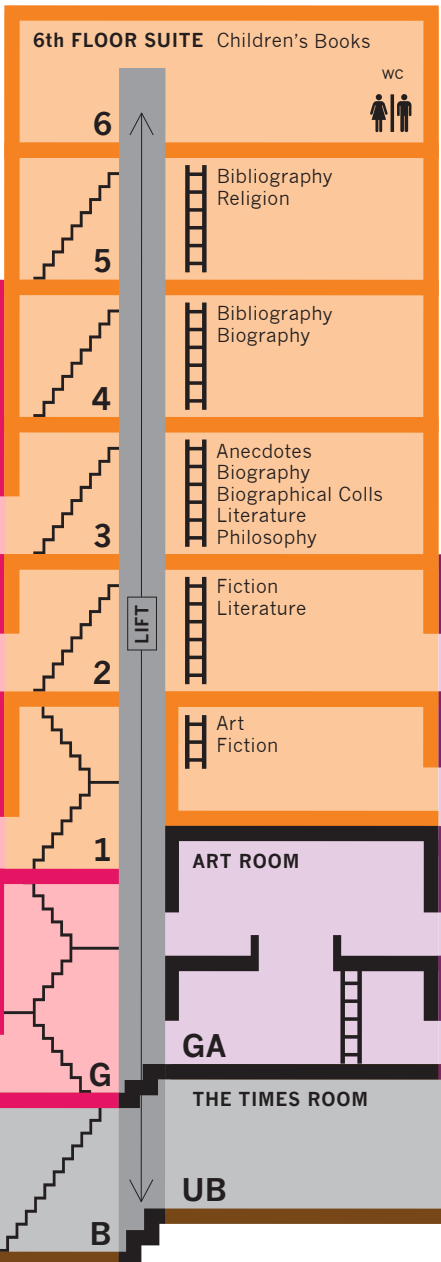
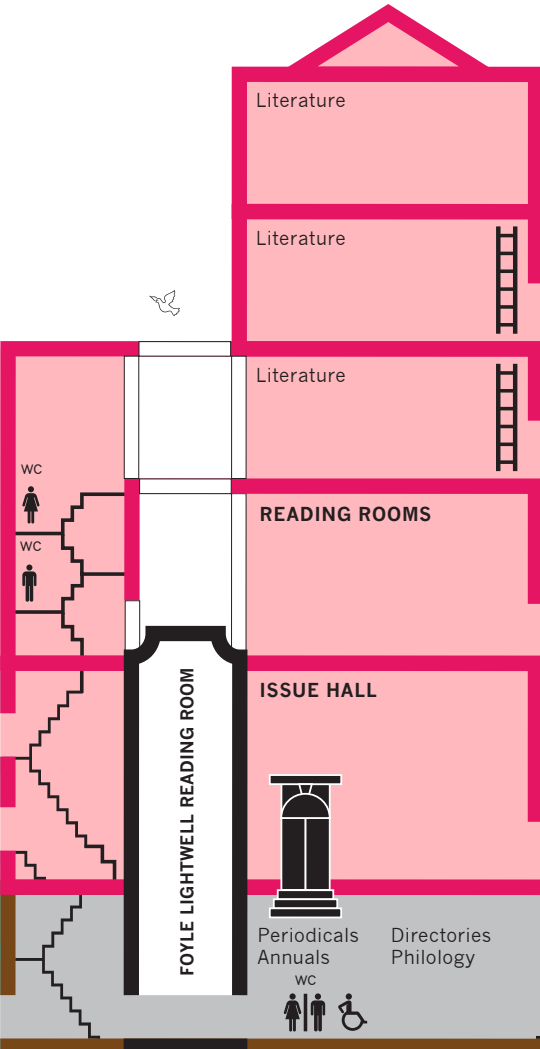
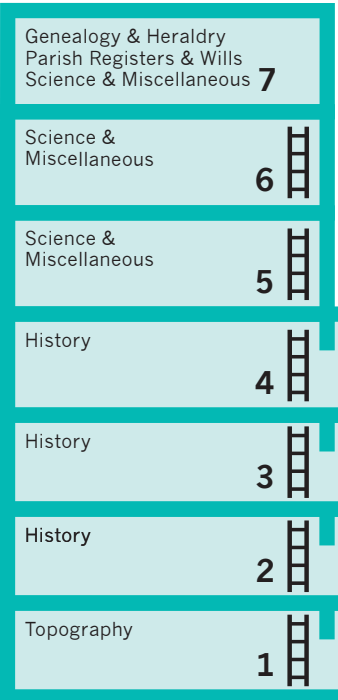


# THE LONDON LIBRARY



BACK STACKS

ST JAMES'S BUILDING

CENTRAL STACK

TS ELIOT HOUSE

BASEMENT

ANECDOTES  
Central Stack, Floor 3

ANNUALS  
Basement, Floor B

ART  
TS Eliot House, Floor M  
Central Stack, Floor M

ART 4to  
Art Room, Floor GA & Gallery

ART small folio  
Central Stack, Floor M

ART folio  
(Enquire at Issue Desk)

BIBLIOGRAPHY  
Central Stack, Floor 4 & 5

BIOGRAPHY (A – Neh)  
BIOGRAPHY 4to & folio  
Central Stack, Floor 4

BIOGRAPHY (Nei – Z)  
BIOGRAPHICAL COLLECTIONS  
Central Stack, Floor 3

CHILDREN'S BOOKS  
Central Stack, Floor 6

FICTION (A – R)  
FICTION 4to  
Central Stack, Floor 2

FICTION (S – Z)  
Central Stack, Floor M

GENEALOGY & HERALDRY  
Back Stacks, Level 7

GUIDE BOOKS  
St James's Building, Issue Hall Gallery

HISTORY  
Back Stacks, Level 2, 3 & 4

HISTORY 4to & folio  
Back Stacks, Level 2

LITERATURE  
Central Stack, Floor 2 & 3  
St James's Building, Floor 2, 3 & 4

LITERATURE 4to  
St James's Building, Floor 2 & 3

LITERATURE folio  
Central stack, Floor 2

PERIODICALS  
Basement, Floor B

PHILOLOGY  
Basement, Floor B

PHILOSOPHY  
Central Stack, Floor 3

RELIGION  
Central Stack, Floor 5

RELIGION folio  
(Enquire at Issue Desk)

SCIENCE & MISC.  
Back Stacks, Level 4, 5, 6 & 7

SOCIETIES  
TS Eliot House, Floor UB

TOPOGRAPHY  
Back Stacks, Level 1

The logo for The London Library, featuring the text "THE LONDON LIBRARY" in a white serif font on a black square background.

THE  
LONDON  
LIBRARY

# Library Floor Plan